

LIGHTCORP

REED PREMIER

Available in standard or high output and in five interlinkable lengths, Reed Premier features multiple state-of-the-art energy-saving components: touch-and-hold continuous dimming, 10-hour automatic turn off, and an optional occupancy sensor that knows to turn on only when you need it to.



REED PREMIER Under Shelf Light

FEATURES

- A properly diffused light source provides a softly blended light pattern that reduces eye strain.
- Single touch on/off and touch-and-hold continuous dimming pad with last state memory.
- The automatic shut-off feature comes standard and will turn the fixture off after 10 hours of continuous use.
- The optional integrated occupancy sensor will power the fixture off after 30 minutes of inactivity and back on as the user re-enters the workspace (auto-on/auto-off).
- The optional integrated vacancy sensor will power the fixture off after 30 minutes of inactivity (manual on/auto-off).
- The optional modular sensor can be programmed as a vacancy or occupancy sensor.
- The optional angle mount accessory allows the fixture to tilt 23 degrees in two directions for applications where directional light is required.
- Proudly designed and manufactured in Grand Haven, Michigan.

SPECIFICATIONS

LENGTHS:
17", 24", 31", 44", 58"

VERSIONS:
standard or high output

LED RATED LIFESPAN:
> 50,000 hours

COLOR TEMPERATURE:
3500K standard; 4000K available – call for price and leadtime estimate

COLOR RENDERING INDEX:
83+

BRIGHTNESS ADJUSTABILITY:
100%–15% continuous

AUTO SHUT OFF:
after 10 hours (± 15 mins.)

POWER SUPPLY:
18-watt wall transformer with 9' cord or 65-watt wall transformer with 11" cord

CORD COLOR:
choose from white or black

MATERIAL:
anodized aluminum and plastic

MOUNTING:
includes brackets for wood/laminate or metal application

CERTIFICATIONS:
ETL listed: compliant to UL 153/8750 & CSA C22.2 No. 9; FCC Part 15 Class B; TAA; BAA; CEC Title 20;

MODULAR SENSOR:
Certified UL 153 portable luminaire accessory CSA C22.2 No. 250.4

WARRANTY:
10 years fixture
5 years power supply

	<u>17"</u>	<u>24"</u>	<u>31"</u>	<u>44"</u>	<u>58"</u>
# LEDS (SO / HO):	24 / 47	36 / 70	48 / 94	72 / 141	96 / 188
LUMENS (SO / HO):	468 / 755	707 / 1217	938 / 1394	1405 / 2080	1870 / 2920
WATTAGE (SO / HO):	8.0 / 13.0	12.4 / 20.4	16.4 / 26.4	24.2 / 38.8	31.2 / 50.0
SYSTEM (SO / HO):	9.1 / 14.6	14.1 / 23.7	17.6 / 28.4	25.9 / 41.4	33.7 / 54.0

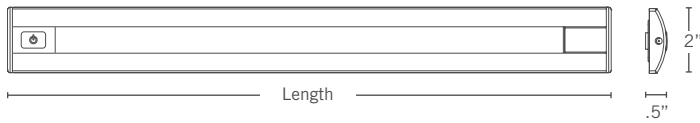
FINISHES

SILVER

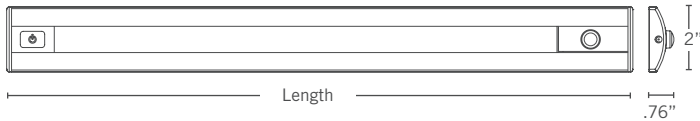
BLACK

REED PREMIER Under Shelf Light

DIMENSIONS



w/Integrated Sensor



	<u>17"</u>	<u>24"</u>	<u>31"</u>	<u>44"</u>	<u>58"</u>
ACTUAL LENGTH:	16.4"	23.3"	30.1"	43.7"	57.4"
ACTUAL LENGTH W/ INT. SENSOR:	17.2"	24.1"	30.9"	44.5"	58.2"
SHELF SIZE:	24"-36"	30"-42"	42"-48"	54"-60"	≥ 72"

SUSTAINABILITY NOTES

- Made with fully-recyclable anodized aluminum and plastic. Please contact your local county or municipality to determine your local recycling options.
- Energy-saving features such as auto shut-off and dimming included; occupancy sensor available as an option
- Lower power consumption
- Mercury-free
- Potential LEED points. For more LEED information please visit <https://new.usgbc.org/leed-v41>

REED PREMIER Under Shelf Light

PHOTOMETRIC DATA

Footcandle outputs measured at 18" from the worksurface.

17" Standard Output

	18"	12"	6"	CL	6"	12"	18"
12"	10	18	27	31	27	18	11
6"	15	30	49	59	49	30	15
CL	18	38	64	79	65	38	19
6"	16	32	54	65	64	33	17
12"	12	21	31	37	31	21	12

17" High Output

	18"	12"	6"	CL	6"	12"	18"
12"	17	30	44	51	44	30	18
6"	26	50	82	97	81	51	26
CL	31	63	109	132	109	65	32
6"	28	56	90	108	91	55	29
12"	20	36	53	59	53	36	21

24" Standard Output

	18"	12"	6"	CL	6"	12"	18"
12"	18	29	39	43	39	28	17
6"	27	49	71	80	70	48	26
CL	33	63	95	106	92	60	32
6"	30	54	80	89	78	53	29
12"	21	34	47	52	47	33	20

24" High Output

	18"	12"	6"	CL	6"	12"	18"
12"	28	45	61	67	60	44	27
6"	43	78	113	127	111	76	42
CL	53	101	152	171	150	99	52
6"	48	87	127	144	126	86	46
12"	33	55	75	83	74	54	33

31" Standard Output

	18"	12"	6"	CL	6"	12"	18"
12"	25	38	49	53	50	39	26
6"	41	67	88	95	87	67	42
CL	50	86	114	125	115	87	52
6"	43	73	96	104	97	74	45
12"	29	45	57	62	58	46	30

31" High Output

	18"	12"	6"	CL	6"	12"	18"
12"	40	61	78	85	79	62	42
6"	64	106	140	152	141	108	67
CL	80	137	183	200	186	141	84
6"	70	116	154	168	156	119	73
12"	47	72	92	99	93	73	49

44" Standard Output

	18"	12"	6"	CL	6"	12"	18"
12"	42	54	61	63	61	54	42
6"	73	95	106	109	104	93	72
CL	94	124	138	141	137	122	94
6"	80	105	117	121	117	104	80
12"	50	64	72	75	72	64	50

44" High Output

	18"	12"	6"	CL	6"	12"	18"
12"	69	88	100	104	100	89	71
6"	118	155	174	180	174	154	120
CL	151	199	224	232	225	202	155
6"	127	167	188	194	189	168	131
12"	79	102	115	120	115	103	81

REED PREMIER Under Shelf Light

PHOTOMETRIC DATA

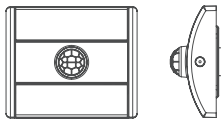
58" Standard Output

	18"	12"	6"	CL	6"	12"	18"
12"	58	65	68	69	68	64	57
6"	101	113	117	118	116	110	98
CL	131	144	150	151	149	143	128
6"	109	122	127	129	127	121	108
12"	67	75	79	80	79	75	67

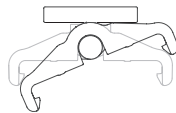
58" High Output

	18"	12"	6"	CL	6"	12"	18"
12"	93	104	110	110	111	104	95
6"	160	179	187	189	187	178	162
CL	205	228	238	240	239	229	207
6"	172	192	202	204	203	194	176
12"	104	120	126	129	127	121	108

ACCESSORIES



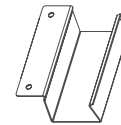
Modular Sensor



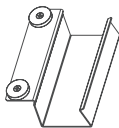
Magnetic Angle Mount



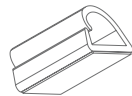
Angle Mount Bar
for Wood/Laminate
Application



Power Supply Support
Bracket for Wood/
Laminate Application



Magnetic Power Supply
Support Bracket



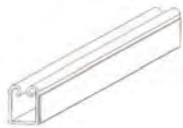
Adhesive Horizontal
Cord Manager



Magnetic Horizontal
Cord Manager



Panel Clip Cord
Manager



17" Vertical
Cord Manager

For more information about our products, please visit
lightcorp.com.

We're social!

Instagram and Facebook: @lightcorp

LinkedIn: [linkedin.com/company/light-corporation](https://www.linkedin.com/company/light-corporation)

CONTACT US

Factory + Headquarters

14800 172nd Avenue
Grand Haven, Michigan 49417

For quotes, specifications, or general product inquiries:

800.526.5658 (option 1)
insidesales@lightcorp.com

For orders, questions about existing orders, or after sales care:

800.526.5658 (option 2)
customerservice@lightcorp.com

www.LightCorp.com