

Most Modest™

# lola

power sling





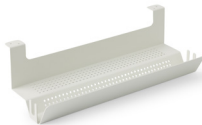
## lola

Foraging beneath furniture to plug in is a thing of the past. The Lola power sling mounts beneath surfaces to keep power accessories within easy reach. Specially designed to cradle the Niko power pendant (but all brands are welcome), she features a bi-level platform to house power strips and bricks alike. Forks on either end of the sling guide and manage cords, while the perforated design promotes airflow (and just looks cool). Available in two finishes.

Designed by Jesse Hill.



12" length



18" length

### finishes

