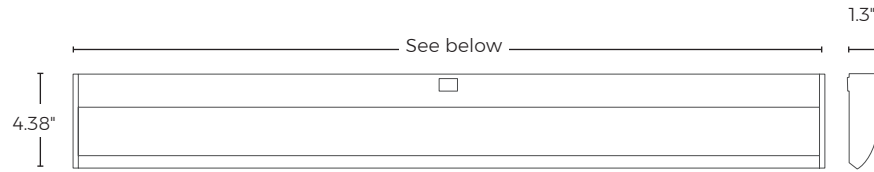


Under Shelf Light

LAMP



L / I G H T C O R P



FEATURES:

- Improved power consumption
- Interlink up to 10 fixtures
- New magnet mounting option
- New high output option

SPECIFICATIONS:

ENERGY CONSUMPTION	see chart below
LIGHT OUTPUT	see chart below
LED RATED LIFESPAN	> 50,000 hours
COLOR TEMPERATURE	3500K standard; 4000K available
COLOR RENDERING INDEX	82+
LAMP	T5 LED tube
LENS	prismatic; batwing also available
REFLECTOR	UV-stable silver
CORD	9' black cord; SW plug, exit center
MATERIALITY	powder-coated steel and plastic
CERTIFICATIONS	ETL listed: compliant to UL 153 & CSA C22.2 No. 250.4; TAA
WARRANTY	5 years

	LUMENS		WATTAGE	
	SO	HO*	SO	HO
24" fixture	589	802	8.7	12.0
36" fixture	776	1034	11.6	15.7
48" fixture	784	1666	13.6	24.0

* estimated values

DIMENSIONS:

	W	H	D
24" fixture	23.3"	1.3"	4.38"
36" fixture	35.1"	1.3"	4.38"
48" fixture	46.9"	1.3"	4.38"

SUSTAINABILITY NOTES:

- Made with fully-recyclable steel and plastic. Please contact your local county or municipality to determine your local recycling options.
- High efficiency lens
- Lower power consumption
- Mercury-free
- Potential LEED points. For more LEED information please visit <https://new.usgbc.org/leed-v41>

MOUNTING:

Includes mounting keyholes for wood/laminate application or integrated magnets for metal application. Spring bar mounting also available.

If specifying a spring bar mount the office furniture system must be identified. Please contact Inside Sales at 800.526.5658 to specify.

FINISHES:

WHITE	SOFT WHITE	SILVER STAR	SAND
GRAY	PEWTER	METALLIC SILVER	METALLIC CHAMPAGNE
METALLIC DK. CHAMPAGNE	CHARCOAL	BLACK	

PHOTOMETRIC DATA:

Footcandle outputs for the 3500K tube measured at 18" from the work surface.

STANDARD OUTPUT							
24" Fixture	18"	12"	6"	CL	6"	12"	18"
12"	11	16	23	27	25	19	12
6"	17	31	45	53	50	37	22
CL	25	45	69	83	78	57	34
6"	29	54	83	101	96	71	40
12"	43	46	66	82	76	56	32

36" Fixture	18"	12"	6"	CL	6"	12"	18"
12"	13	18	23	26	25	21	16
6"	24	36	46	52	51	43	30
CL	37	59	78	87	83	67	48
6"	45	72	97	109	105	86	59
12"	37	58	75	84	82	68	47

48" Fixture	18"	12"	6"	CL	6"	12"	18"
12"	14	18	20	22	22	20	17
6"	26	36	41	43	43	39	35
CL	43	60	71	76	74	67	55
6"	54	77	91	97	95	87	70
12"	40	57	68	73	71	65	52

SPECIFICATION NOTES:

- The two-position rocker switch is positioned at the center of the fixture.
- Cord and power switch location on the 24" fixture is left of center.
- The starter power fixture is available with a 90° SW rotation fused plug only.
- The starter power and master control fixtures are supplied with a 9', 18-gauge power cord with a 90° SW rotation fused plug. Cord exits from the center of the fixture.
- Cords are not field-exchangeable.
- One horizontal cord manager is included with each fixture, two horizontal cord managers are included with each daisy chain fixture. Extra cord managers are available for purchase.
- When specifying metallic finishes, please note that the end caps will be a non-metallic accent color.

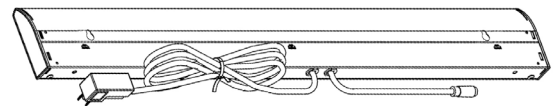
ABOUT DAISY CHAINING/INTERLINKING:

Daisy chaining (or interlinking) is the process of powering a fixture from the preceding fixture and reducing plug outlet use to one. Most fluorescent daisy chaining allows for fixture control with either independent switching or master control with a single unit. This process is heavily regulated, but allowed in most cities, due to risk of overloading circuits. Check your local code.

Up to ten Tazetta LED fixtures may be daisy-chained together.

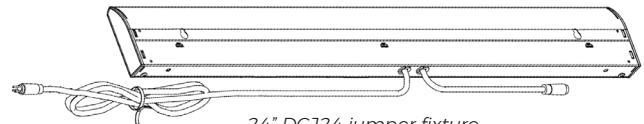
Independent Switching (DCP) The standard daisy chain configuration. With this option each fixture runs independently of the first fixture in the line and must be turned on or off individually.

Master Control (MCDP) An optional daisy chain configuration. With this option, the first unit in the line controls the power of all down line fixtures. Each down line fixture can be switched independently once the power is supplied. The benefit of using the master control option is that all down line fixtures can be controlled with a single switch (on the fixture with the power cord). These options are specified as the first fixture in line with either DCP or MCDP.



DCP power fixture

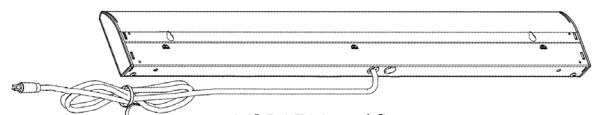
Jumper Fixtures (DCJ) These fixtures connect the power fixture and end fixture in a daisy chain arrangement. Jumper lengths are specified using the corresponding order code.



24" DCJ24 jumper fixture

End fixture (DCE) is the last fixture in a daisy chain arrangement. All end fixture cords exit from the center of the fixture. End unit jumper lengths are specified using the corresponding order code (ex. DCE45).

- When specifying the daisy chain option, specify one power cord fixture and up to three jumper cord fixtures and one end fixture— a maximum total of five fixtures.
- The end line jumper cord has one jumper cord with a male plus to complete the daisy chain run. Length of jumper cord must be specified. Please call Inside Sales at 800.526.5658.
- The daisy chain cord needs 3" of clearance from the cord exit to the wall to avoid damaging the cord.
- If a power outlet requires a cord to be routed the opposite way of a power cord exit and a cord exit option is not given, the cords may be crossed in back of the fixture to match the required routing; use the provided cord clips to secure cords in place.



24" DCE24 end fixture